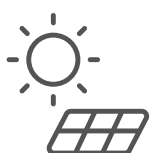




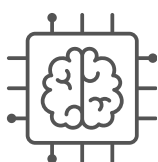
CURTAIN BIDI BATTERY



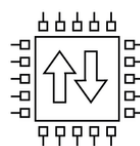
Control by Virtual
Assistants



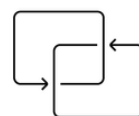
With built-in
battery



Electronic
limit switch



Electronic
limit switch



Two-way
protocol



Radio control

CURTAIN BIDI BATTERY

This motor stands out for its manual function and its bidirectional radio control. With features such as automatic limit switch adjustment and connectivity with home automation control units, the Curtain Bidi offers intelligent and convenient automation.

REFERENCE



CURTAIN BIDI BATTERY | 80.024.001

Fully automatic electronic limit switch.

Two-way radio receiver.

Up to 6 meters of curtain rail.

Manual operation activated with a slight pull to open or close.

Obstacle detection

Silent and fast.

Removable battery

TECHNICAL CHARACTERISTICS

Par-nominal	Speed	Feeding	Nominal power	Amperage	Working time	Max rotations	Degree of protection	Length measurement	Max Weight
1,2 Nm	14 rpm	100-240V	16 In	0.16 A	4 min	∞	IP 20	386 mm	50 Kg

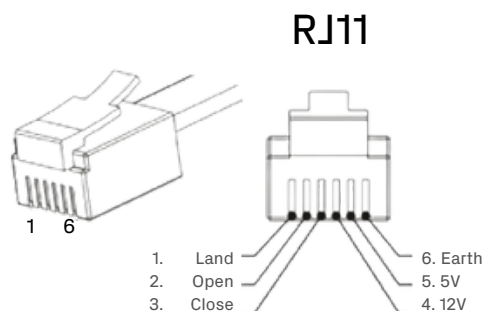
MOTOR CONNECTORS



USB-C power connector



RJ11 output for RS485 connection



COMPATIBLE WITH:



KUMO WAVE
BD.100.001



KIK1
BD.003.101



KIK15
BD.003.115



KIKWALL
90.003.101



KIKWALL15
90.003.115



PANEL SOLAR
70.325.100

ACCESSORIES:



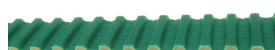
**VERTICAL TERMINAL
RAIL MOTOR SIDE**

80.024.003



**TERMINAL VERTICAL
RIEL**

80.024.004



**TOOTHED BELT 12MM
100M/U.**

80.024.005



**ALUMINUM RAIL
6M/U.**

80.024.006



METAL BAND UNION

80.024.007



TRANSPORT CART

80.024.008



CART

80.024.009



TOPE RIEL

80.024.010



HOOK TERMINAL RAIL

80.024.011



CEILING SUPPORT

80.024.012



RAIL UNION

80.024.013



RAIL UNION SCREW

80.024.014

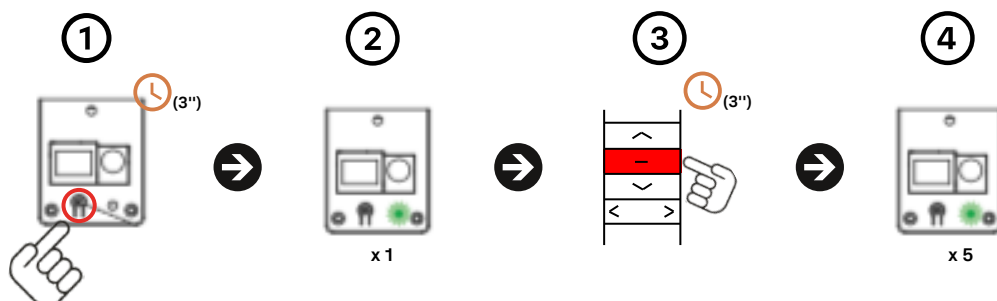


**PERFECT WAVE 8MM
RAIL 1000M/U.**

80.020.017

INSTRUCTIONS:

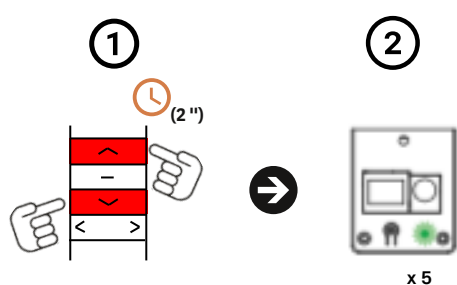
1. LINK FIRST TRANSMITTER



Procedure:

1. Turn on power and then press the motor programming button for two seconds (x2).
2. The Green LED will light up.
3. Press (STOP) on the transmitter to record for three seconds (3").
4. The Green LED will flash five times (x5).

2. CHANGE DIRECTION OPENING/CLOSING

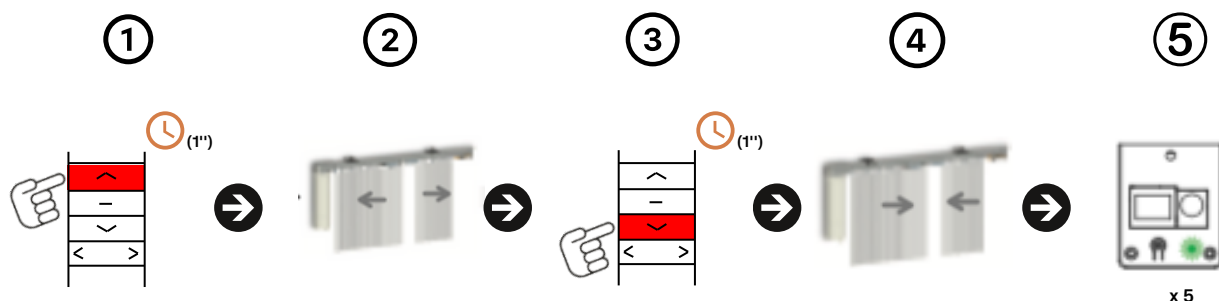


Procedure:

1. Press the (OPEN) + (CLOSE) button on the already memorized transmitter for two seconds (2").
2. The Green LED will flash five times (x5).

This function is necessary for the correct interpretation of the Motor in the Eurotronic APP

3. PROGRAMMING LIMIT SWITCHES

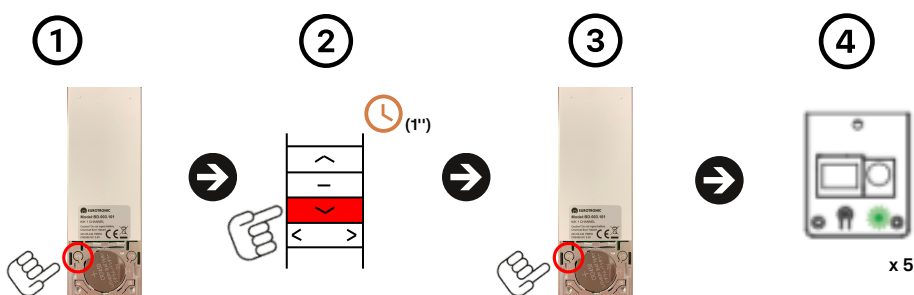


Procedure:

With the motor connected to power and once the remote control has been recorded.

1. Press the (UPLOAD) button on an already recorded transmitter for one second (1").
2. The motor will open until it stops due to pressure and will record the opening limit switch at that point.
3. Then press the (CLOSE) button on the same transmitter for one second.
4. The motor will close until it stops due to pressure and will record the closing limit switch at that point.
5. At the end of the process and if it was correct, the green LED will flash five times (x5).

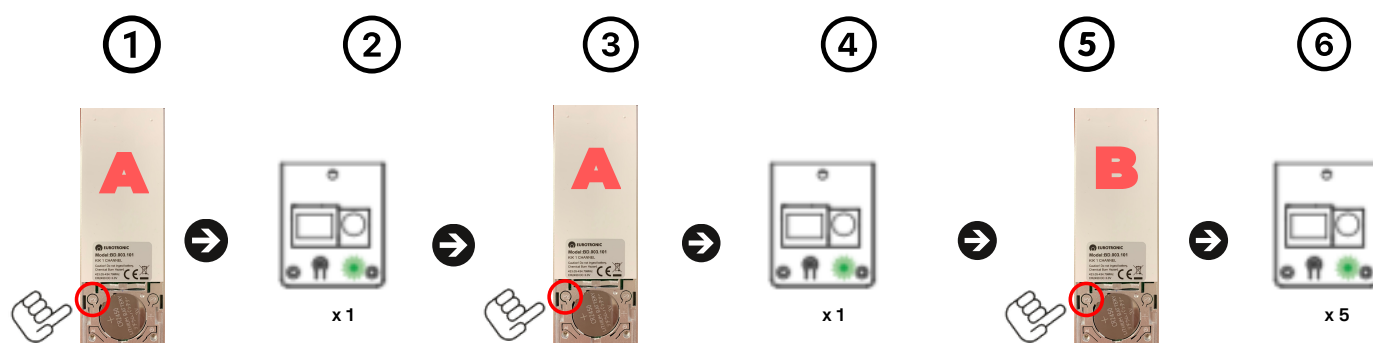
4. DELETE LIMIT SWITCHES



Procedure:

1. Press the button (P2) located behind the transmitter already memorized.
2. Press the (CLOSE) button on the transmitter for one second (1").
3. Press the button (P2) on the transmitter again.
4. The Green LED will flash five times (x5) to confirm.

5. ADD/DELETE ADDITIONAL TRANSMITTER

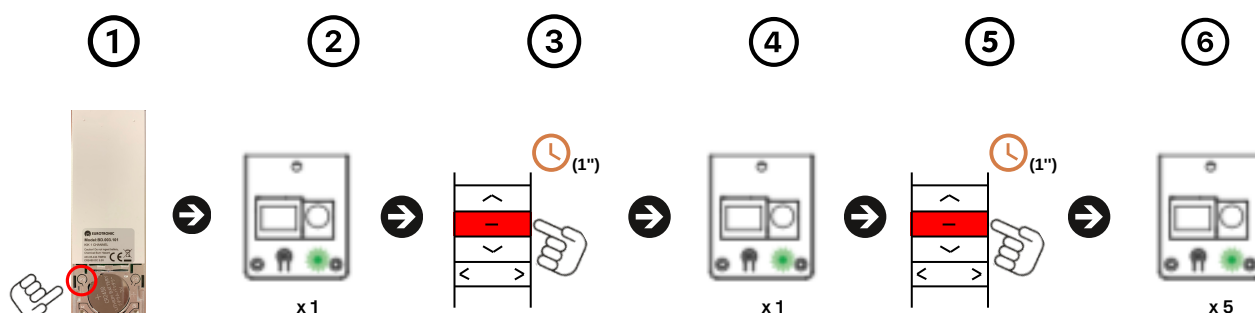


Procedure:

1. Press the button (P2) located behind the already linked transmitter (A).
2. The green LED will flash.
3. We will press the button (P2) of the same transmitter (A) again.
4. The green LED will flash.
5. Next, press the (P2) button on the new transmitter (B).
6. The green LED will flash five times (x5).

Repeat the same process to delete the linked transmitter.

6. ADD/DELETE FAVORITE POSITION

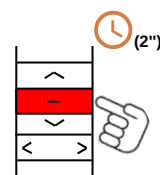


Procedure:

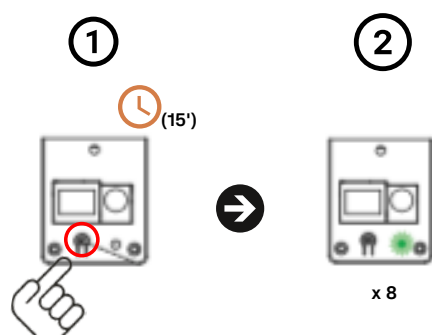
We will position the motor in the desired favorite position using the up or down button on the transmitter.

1. We will press the button (P2) located behind the transmitter.
2. The green LED will flash.
3. We will press the central button (STOP).
4. The green LED will flash.
5. We will press the central button (STOP) for the second time to confirm.
6. The green LED will flash five times and the favorite position will be set.

To search for the favorite position, press the (STOP) button for two seconds.



7. RESET TO FACTORY MODE



Procedure:

1. Press the Motor programming button for fifteen seconds (15").
2. After this time the green LED will flash eight times (x8) to confirm.



www.eurotronic-europe.com

C/Pica d'Estats, 108-118 Poligono Industrial Sant Isidre 08272 Sant
Fruitós de Bages (Barcelona) SPAIN

pedidos@eurotronic-europe.com Tel: +34 932 420 108